

SOIL EROSION AND SEDIMENT CONTROL NOTES:

- ALL SOIL EROSION AND SEDIMENT CONTROL PRACTICES ON THIS PLAN WILL BE CONSTRUCTED IN ACCORDANCE WITH THE "NEW JERSEY STANDARDS FOR SOIL EROSION AND SEDIMENT CONTROL," 7TH EDITION LAST REVISED JULY 2017, EFFECTIVE DECEMBER 2017. THESE MEASURES WILL BE INSTALLED PRIOR TO ANY MAJOR SOIL DISTURBANCE OR IN THEIR PROPER SEQUENCE AND MAINTAINED UNTIL PERMANENT PROTECTION IS ESTABLISHED.
- ALL SOIL TO BE EXPOSED OR STOCKPILED FOR A PERIOD OF GREATER THAN 14 DAYS, AND NOT UNDER ACTIVE CONSTRUCTION, WILL BE TEMPORARILY SEEDED AND MULCHED OR OTHERWISE PROVIDED WITH VEGETATIVE COVER. THIS TEMPORARY COVER SHALL BE MAINTAINED UNTIL SUCH TIME WHEREBY PERMANENT RESTABILIZATION IS ESTABLISHED.
- SEEDING DATES:** THE FOLLOWING SEEDING DATES ARE BEST RECOMMENDED TO ESTABLISH PERMANENT VEGETATIVE COVER WITHIN MOST LOCATIONS IN THE HESPO: SPRING - 3/1-5/31 AND FALL - 8/15-10/31.
- SEDIMENT FENCES ARE TO BE PROPERLY TRENCHED AND MAINTAINED UNTIL PERMANENT VEGETATIVE COVER IS ESTABLISHED.
- ALL STORM DRAINAGE INLETS SHALL BE PROTECTED BY ONE OF THE PRACTICES ACCEPTED IN THE STANDARDS, AND PROTECTION SHALL REMAIN UNTIL PERMANENT RESTABILIZATION IS ESTABLISHED. STORM DRAINAGE OUTLET POINTS SHALL BE PROTECTED AS REQUIRED BEFORE THEY BECOME FUNCTIONAL.
- MULCH MATERIALS SHALL BE UN-ROTTED SMALL GRAIN STRAW APPLIED AT THE RATE OF 70 TO 90 POUNDS PER 1,000 SQUARE FEET AND ANCHORED WITH A MULCH ANCHORING TOOL, LIQUID MULCH BINDER, OR NETTING. OTHER SUITABLE MATERIALS MAY BE USED IF APPROVED BY THE SOIL CONSERVATION DISTRICT.
- ALL EROSION CONTROL DEVICES SHALL BE PERIODICALLY INSPECTED, MAINTAINED AND CORRECTED BY THE CONTRACTOR. ANY DAMAGE INCURRED BY EROSION SHALL BE REPAIRED IMMEDIATELY.
- THE HUDSON-ESSEX-PASSAIC SOIL CONSERVATION DISTRICT WILL BE NOTIFIED IN WRITING AT LEAST 48 HOURS PRIOR TO ANY SOIL DISTURBING ACTIVITIES. FAX - (862) 333-4502 OR EMAIL - INFORMATION@HESPOD.ORG
- THE APPLICANT MUST OBTAIN A DISTRICT ISSUED REPORT OF COMPLIANCE PRIOR TO APPLYING FOR THE PERMIT OR TEMPORARY CERTIFICATE OF OCCUPANCY FROM THE RESPECTIVE MUNICIPALITY, NJ - DOA OR ANY OTHER REGULATORY AGENCY. THE DISTRICT AT 862-333-4507 TO REQUEST A FINAL INSPECTION, GIVING ADVANCED NOTICE UPON COMPLETION OF THE RESTABILIZATION MEASURES. "PAVING" MAY BE POSTED WITH THE DISTRICT WHEN WINTER WEATHER OR SNOW COVER PROHIBITS THE PROPER APPLICATION OF SEED, MULCH, FERTILIZER OR HYDRO-SEED.
- PAVED ROADWAYS MUST BE KEPT CLEAN AT ALL TIMES. DO NOT UTILIZE A FIRE OR GARDEN HOSE TO CLEAN ROADS UNLESS THE RUNOFF IS DIRECTED TO A PROPERLY DESIGNED AND FUNCTIONING SEDIMENT BASIN. WATER PUMPED OUT OF THE EXCAVATED AREAS CONTAINS SEDIMENTS THAT MUST BE REMOVED PRIOR TO DISCHARGING TO RECEIVING BODIES OF WATER USING REMOVABLE PUMPING STATIONS, SUMP PITS, PORTABLE SEDIMENTATION TANKS AND/OR SILT CONTROL BAGS.
- ALL SURFACES HAVING LAWN OR LANDSCAPING AS FINAL COVER ARE TO BE PROVIDED TOPSOIL PRIOR TO RE-SEEDING, SOODING OR PLANTING A DEPTH OF 5.0 INCHES, FORMED IN PLACE, IS REQUIRED, AS PER THE STANDARDS FOR TOPSOILING AND LAND GRADING, EFFECTIVE DECEMBER 2017.
- ALL PLAN REVISIONS MUST BE SUBMITTED TO THE DISTRICT FOR PROPER REVIEW AND APPROVAL.
- A CRUSHED STONE WHEEL CLEANING TRACKING-PAD IS TO BE INSTALLED AT ALL SITE EXITS USING 2 1/2" CRUSHED ANGULAR STONE (ASTM 2 OR 3) TO A MINIMUM LENGTH OF 50 FEET AND MINIMUM DEPTH OF 6". ALL DRIVEWAYS MUST BE PROVIDED WITH CRUSHED STONE UNTIL PAVING IS COMPLETE.
- STEEP SLOPES INCURRING DISTURBANCE MAY REQUIRE ADDITIONAL STABILIZATION MEASURES. THESE "SPECIAL" MEASURES SHALL BE DESIGNED BY THE APPLICANT'S ENGINEER AND BE APPROVED BY THE SOIL CONSERVATION DISTRICT.
- THE HUDSON-ESSEX-PASSAIC SOIL CONSERVATION DISTRICT SHALL BE NOTIFIED IN WRITING FOR THE SALE OF ANY PORTION OF THE PROJECT OR FOR THE SALE OF INDIVIDUAL LOTS. NEW OWNERS INFORMATION SHALL BE PROVIDED. ADDITIONAL MEASURES DEEMED NECESSARY BY DISTRICT OFFICIALS SHALL BE IMPLEMENTED AS CONDITIONS WARRANT.

TOPSOIL STOCKPILE PROTECTION

- CONSTRUCT TEMPORARY DIVERSION BERM AND/OR HAY BALE BARRIER AROUND STOCKPILE AREA AS REQUIRED.
- APPLY LIMESTONE AT A RATE OF 90 LBS/1000 S.F.
- APPLY FERTILIZER (10-20-10) AT A RATE OF 11 LBS/1000 S.F.
- APPLY PERENNIAL RYEGRASS AT A RATE OF 1 LB/1000 S.F.
- MULCH WITH UNROTTED SALT HAY OR SMALL GRAIN STRAW IMMEDIATELY AFTER SEEDING. APPLY AT A RATE OF 90 LBS/1000 S.F.

TEMPORARY STABILIZATION SPECIFICATIONS

- APPLY GROUND LIMESTONE AT A RATE OF 90 LBS/1000 S.F.
- APPLY FERTILIZER (10-20-10) AT A RATE OF 14 LBS/1000 S.F. AND WORK INTO 4" DEEP.
- APPLY SEED MIXTURE: PERENNIAL RYEGRASS AT 20 LBS/ACRE, PERENNIAL RYEGRASS CREEPING RED FESCUE AT 15 LBS/ACRE OR AT 40 LBS/ACRE OR CHEWING RED FESCUE AT 15 LBS/ACRE OR APPROVED EQUAL.
- MULCH WITH UNROTTED SALT HAY OR SMALL GRAIN STRAW IMMEDIATELY AFTER SEEDING. APPLY AT A RATE OF 90 LBS/1000 S.F. AND SECURE BY APPROVED METHODS (I.E. PEG AND TWINE, MULCH NETTING, OR LIQUID MULCH BINDER).
- PLANT SEED BETWEEN MARCH 1 AND MAY 15 OR BETWEEN AUGUST 15 AND OCTOBER 1, IF POSSIBLE.

PERMANENT STABILIZATION SPECIFICATIONS

- APPLY TOPSOIL TO A DEPTH OF 6".
- APPLY GROUND LIMESTONE AT A RATE OF 90 LBS/1000 S.F.
- APPLY FERTILIZER (10-20-10) AT A RATE OF 14 LBS/1000 S.F.
- APPLY SEED MIXTURE: PERENNIAL RYEGRASS AT 20 LBS/ACRE, PERENNIAL RYEGRASS CREEPING RED FESCUE AT 15 LBS/ACRE OR AT 40 LBS/ACRE OR KENTUCKY BLUEGRASS AT 20 LBS/ACRE OR APPROVED EQUAL.
- MULCH WITH UNROTTED SALT HAY OR SMALL GRAIN STRAW IMMEDIATELY AFTER SEEDING. APPLY AT A RATE OF 90 LBS/1000 S.F. ACCORDING TO THE NEW JERSEY STANDARDS.
- ANCHOR MULCH WITH EMULSIFIED ASPHALT (ES-1) APPLIED AT A RATE OF 1 GAL/1000 S.F. OTHER APPROVED METHODS (I.E. PEG AND TWINE, OR MULCH NETTING) MAY BE USED, IF POSSIBLE, PLANT BETWEEN MARCH 1 AND MAY 15, OR BETWEEN AUGUST 15 AND OCTOBER 1.

SEQUENCE OF CONSTRUCTION

- INSTALL EROSION CONTROL MEASURES INCLUDING SILT FENCE, VEHICLE WHEEL CLEANING BLANKET, ETC AS NOTED ON PLAN. DURATION = 2 DAYS.
 - CLEAR AND GRUB PROPERTY. DURATION = 5 DAYS.
 - STRIP AND STOCKPILE TOPSOIL. INSTALL SILT FENCE AROUND STOCKPILES. PERFORM TEMPORARY STABILIZATION OF STOCKPILES. DURATION = 5 DAYS.
 - CONSTRUCT SITE IMPROVEMENTS. DURATION = 120 DAYS.
 - INSTALL PERMANENT STABILIZATION. DURATION = 6 DAYS.
 - CLEAN ALL INFILTRATION BASINS AND CONNECT WATER QUALITY STRUCTURES TO DRAINAGE SYSTEM. DURATION = 2 DAYS.
 - REMOVE TEMPORARY SOIL EROSION MEASURES AFTER PERMANENT STABILIZATION IS ESTABLISHED AND APPROVED BY SOIL CONSERVATION DISTRICT. DURATION = 2 DAYS.
- TOTAL DURATION = 142 DAYS.

STANDARD FOR DUST CONTROL

DEFINITION
THE CONTROL OF DUST ON CONSTRUCTION SITES AND ROADS.

PURPOSE
TO PREVENT BLOWING AND MOVEMENT OF DUST FROM EXPOSED SOIL SURFACES, REDUCED ON-SITE AND OFF-SITE DAMAGE AND HEALTH HAZARDS, AND IMPROVE TRAFFIC SAFETY.

CONDITION WHERE PRACTICE APPLIES
THIS PRACTICE IS APPLICABLE TO AREAS SUBJECT TO DUST BLOWING AND MOVEMENT WHERE ON-SITE DAMAGE IS LIKELY WITHOUT TREATMENT. CONSULT WITH LOCAL MUNICIPAL ORDINANCES ON ANY RESTRICTIONS.

WATER QUALITY ENHANCEMENT
SEDIMENTS DEPOSITED AS "DUST" ARE OFTEN FINE COLLOIDAL MATERIAL WHICH IS EXTREMELY DIFFICULT TO REMOVE FROM WATER ONCE IT BECOMES SUSPENDED. USE OF THIS STANDARD WILL HELP TO CONTROL THE GENERATION OF DUST FROM CONSTRUCTION SITES AND SUBSEQUENT BLOWING AND DEPOSITION INTO LOCAL SURFACE WATER RESOURCES.

PLANNING CRITERIA
THE FOLLOWING METHODS SHOULD BE CONSIDERED FOR CONTROLLING DUST:
MULCHES - SEE STANDARD OF STABILIZATION WITH MULCHES ONLY, PG. 5-1
VEGETATIVE COVER - SEE STANDARD FOR TEMPORARY VEGETATIVE COVER, PG. 7-1, PERMANENT VEGETATIVE COVER FOR SOIL STABILIZATION PG. 4-1, AND PERMANENT STABILIZATION WITH SOIL, PG. 6-1.
SPRAY-ON ADHESIVES - ON MINERAL SOILS (NOT EFFECTIVE ON MUCK SOILS). KEEP TRAFFIC OFF THESE AREAS.

TABLE 16-1. DUST CONTROL MATERIALS

MATERIAL	WATER DILUTION	TYPE OF NOZZLE	APPLY GALLONS/ ACRE
MINERAL ASPHALT EMULSION	7:1	COARSE SPRAY	1200
LATEX EMULSION	12.5:1	FINE SPRAY	235
RESIN IN WATER		FINE SPRAY	300
POLYACRYLAMIDE (PAM) - SPRAY ON			
POLYACRYLAMIDE (PAM) - DRY SPREAD			
ADDED TO SOY BEAN SOAP STOCK	NONE	COARSE SPRAY	1200

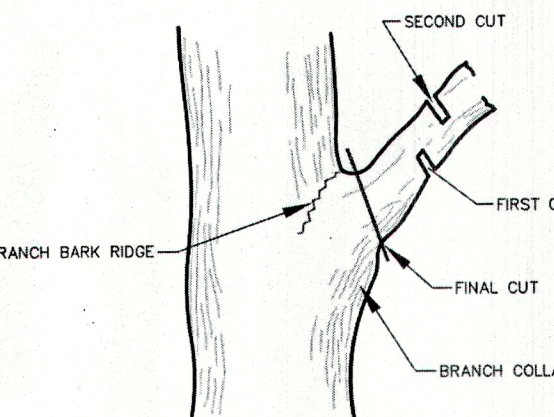
TILLAGE - TO ROUGHEN SURFACE AND BRING CLODS TO THE SURFACE. THIS IS A TEMPORARY EMERGENCY MEASURE WHICH SHOULD BE USED BEFORE SOIL BLOWING STARTS. BEGIN PLOWING ON WINDWARD SIDE OF SITE. CHISEL-TYPE PLOWS SPACED ABOUT 12 INCHES APART, AND SPRING-TOOTHED HARROWS ARE EXAMPLES OF EQUIPMENT WHICH MAY PRODUCE THE DESIRED EFFECT.

SPRINKLING - SITE IS SPRINKLED UNTIL THE SURFACE IS WET.

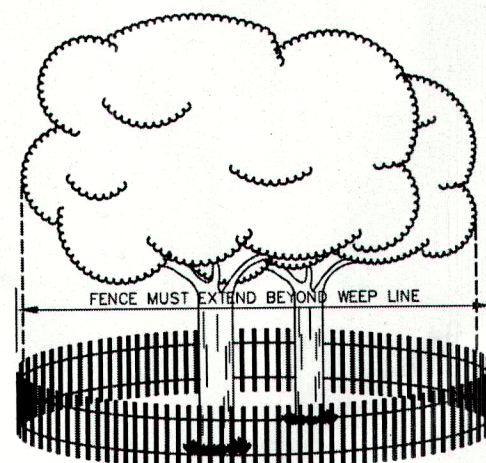
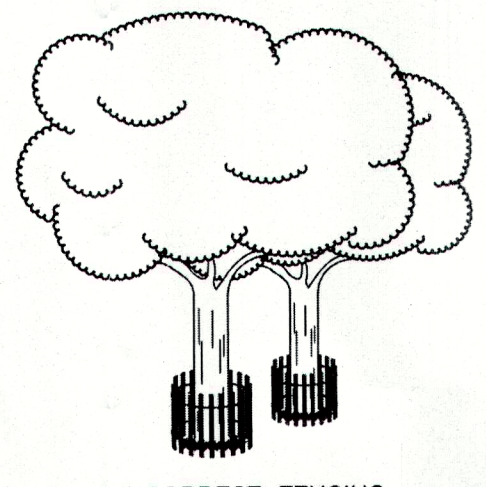
BARRIERS - SOLID BOARD FENCES, SNOW FENCES, BURLAP FENCES, CRATE WATES, BALES OF HAY, AND SIMILAR MATERIAL CAN BE USED TO CONTROL AIR CURRENTS AND SOIL BLOWING.

CALCIUM CHLORIDE - SHALL BE IN THE FORM OF LOOSE, DRY GRANULES OR FLAKES FINE ENOUGH TO FEED THROUGH COMMONLY USED SPREADERS AT A RATE THAT WILL KEEP SURFACE MOST BUT NOT CAUSE POLLUTION OR PLANT DAMAGE. IF USED ON STEEPER SLOPES, THEN USE OTHER PRACTICES TO PREVENT WASHING INTO STREAMS, OR ACCUMULATION AROUND PLANTS.

STONE - COVER SURFACE WITH CRUSHED STONE OR COARSE GRAVEL.



TREE LIMB REMOVAL



TREE PROTECTION

NOT TO SCALE

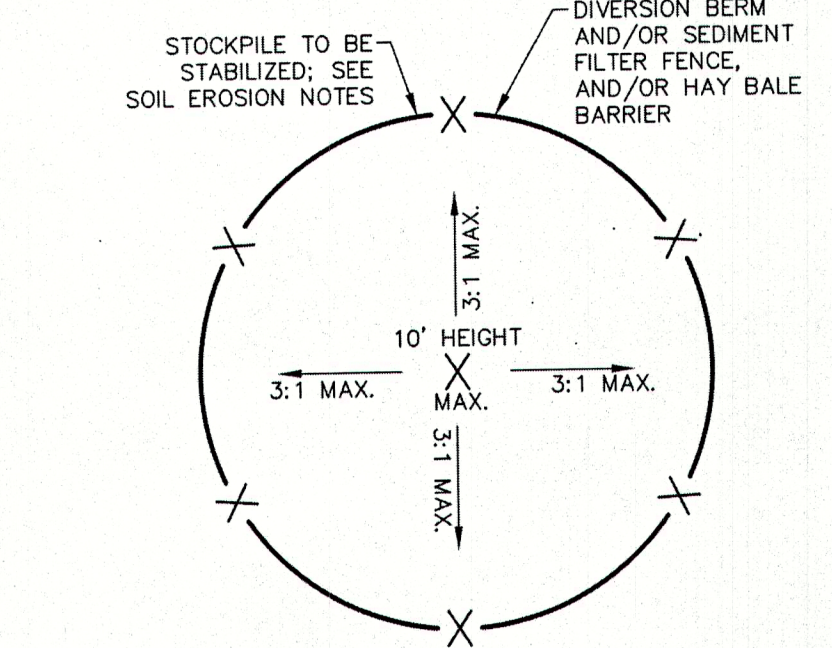
SOIL COMPACTION EXEMPTION NOTE

AS DETERMINED BY THE STATE POLICY MAP, THE PROJECT AREA FALLS WITHIN THE METROPOLITAN PLANNING AREA (PA1). UNDER EXISTING CONDITIONS, THE SITE IS NOT COVERED IN WOODY VEGETATION NOR REGROWTH. IN ACCORDANCE WITH NEW JERSEY STANDARD FOR LAND GRADING (REVISED 2017), NON WOODY VEGETATED PA1 AREAS FALL UNDER THE SOIL COMPACTION EXEMPTION LIST AS A "URBAN REDEVELOPMENT" AND IS DEFINED BY NJDEP AS "PREVIOUSLY DEVELOPED".

SOIL TYPES

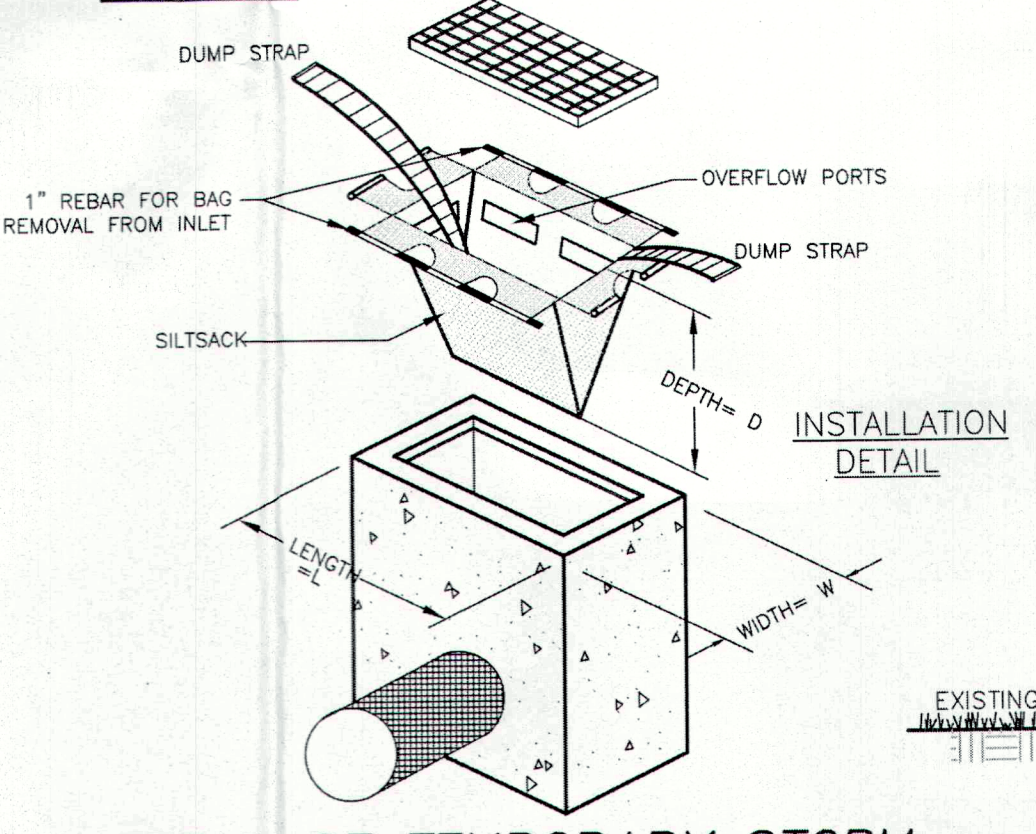
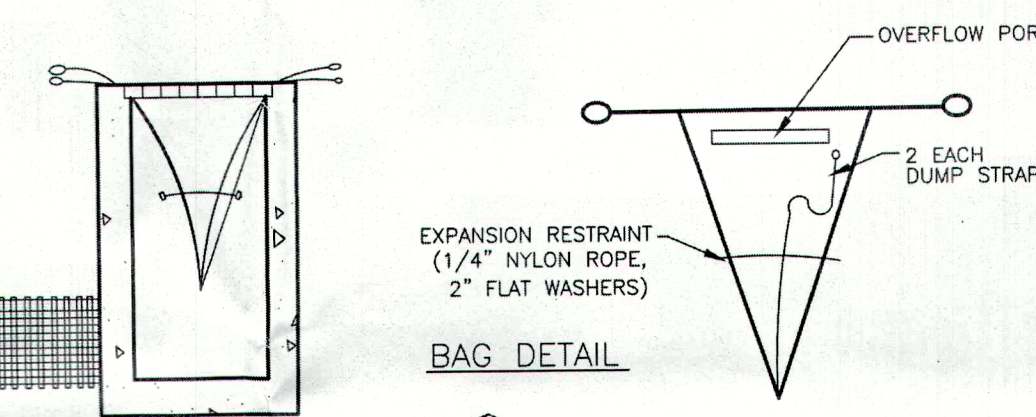
SOIL TYPE SYMBOL	SOIL TYPE DESCRIPTION
PecuuB	PECKMANTOWN - URBAN LAND, PECKMANTOWN SUBSTRATUM COMPLEX, 0 TO 8 PERCENT SLOPES

INFORMATION PER USDA WEB SOIL SURVEY



TOPSOIL STOCKPILE DETAIL

NOT TO SCALE

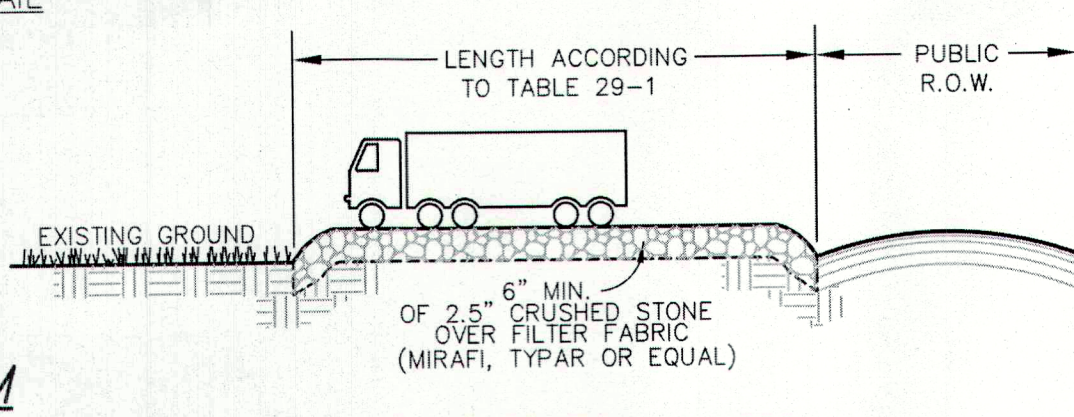


DETAIL OF TEMPORARY STORM SEWER INLET PROTECTION

NOT TO SCALE

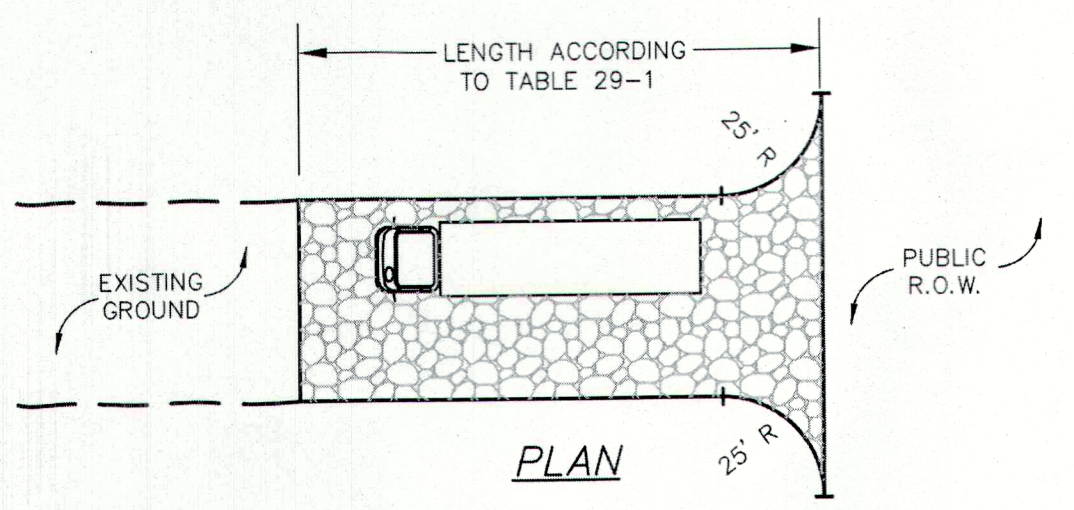
TABLE 29-1

PERCENTAGE SLOPE OF ROADWAY	LENGTH REQUIRED	
	COARSE GRAINED SOILS	FINE GRAINED SOILS
0-2%	50 FT	100 FT
2-5%	100 FT	200 FT
> 5%	ENTIRE SURFACE STABILIZED WITH F.A.B.C. AS PRESCRIBED BY LOCAL ORDINANCE OR OTHER GOVERNING BODY.	



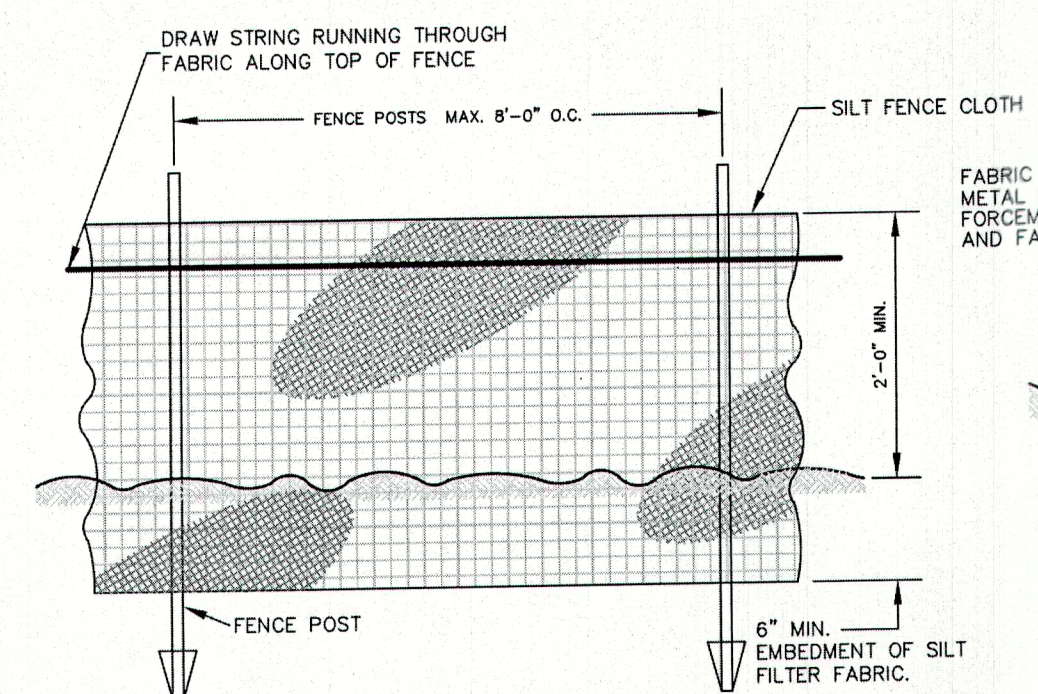
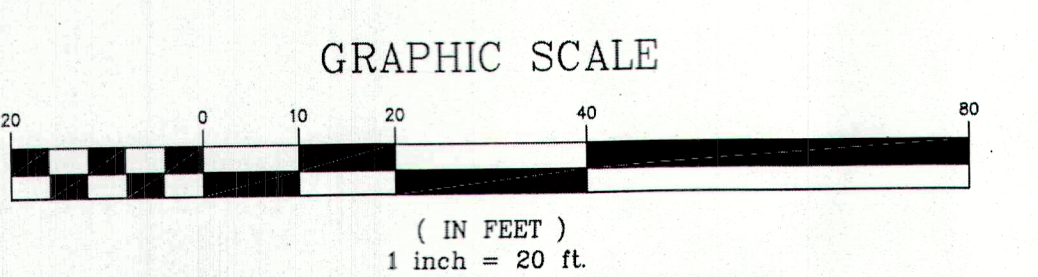
STABILIZED CONSTRUCTION ENTRANCE

NOT TO SCALE



STABILIZED CONSTRUCTION ENTRANCE

NOT TO SCALE

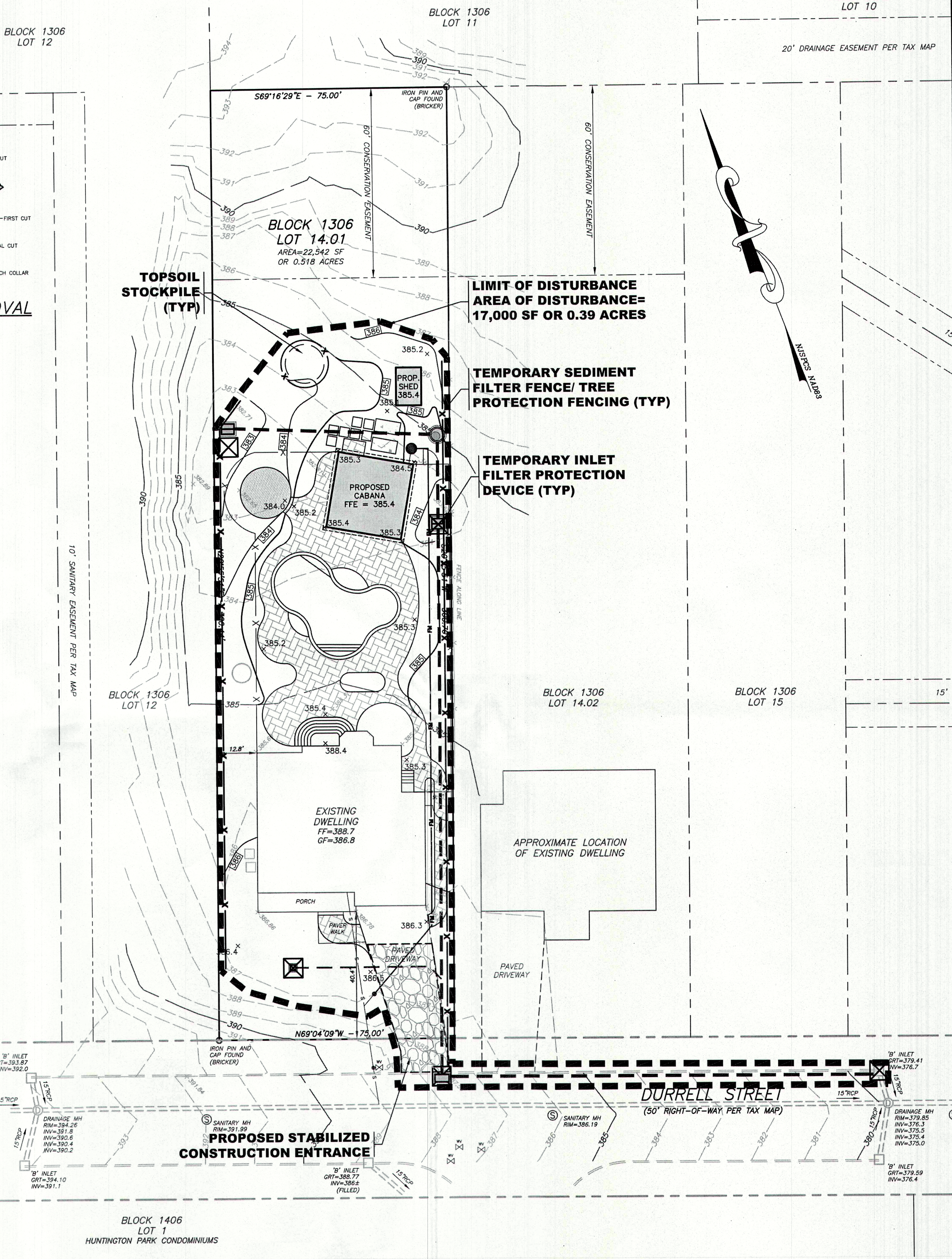


REQUIREMENTS FOR SILT FENCE

- NOTES:**
- FENCE POSTS SHALL BE SPACED 8 FEET CENTER-TO-CENTER OR CLOSER. THEY SHALL EXTEND AT LEAST 2 FEET INTO THE GROUND AND EXTEND AT LEAST 2 FEET ABOVE GROUND. POSTS SHALL BE CONSTRUCTED OF HARDWOOD WITH A MINIMUM DIAMETER THICKNESS OF 1 1/2".
 - METAL FENCE WITH 6" OR SMALLER OPENINGS AND AT LEAST 2" HIGH MAY BE UTILIZED, FASTENED TO THE FENCE POSTS TO PROVIDE REINFORCEMENT AND SUPPORT TO THE GEOTEXTILE FABRIC WHERE SPACE FOR OTHER PRACTICES IS LIMITED AND VEGETATION LOADING IS EXPECTED.
 - A GEOTEXTILE FABRIC, RECOMMENDED FOR SUCH USE BY THE MANUFACTURER, SHALL BE BURIED AT LEAST 6" DEEP IN THE GROUND. THE FABRIC SHALL EXTEND AT LEAST 2' ABOVE THE GROUND. THE FABRIC MUST BE SECURELY FASTENED TO THE POSTS USING A SYSTEM CONSISTING OF METAL FASTENERS (NAILS OF STAPLES) AND A HIGH STRENGTH REINFORCEMENT MATERIAL (NYLON WEBBING, GROMMETS, WASHERS, ETC.) PLACED BETWEEN THE FASTENER AND THE GEOTEXTILE FABRIC. THE FASTENING SYSTEM SHALL RESIST TEARING AWAY FROM THE POST. THE FABRIC SHALL INCORPORATE A GROMMETING IN THE TOP PORTION OF THE FENCE FOR ADDED STRENGTH.

SEDIMENT FILTER FENCE

NOT TO SCALE



DYKSTRA WALKER DESIGN GROUP PA
PROFESSIONAL ENGINEERS, PLANNERS & SURVEYORS
21 BOWLING GREEN PARKWAY, SUITE 204 - LAKE HOPATCONG, NJ 07849
PHONE (973) 663-6540 - FAX (973) 663-0042
WWW.DYKSTRAWALKER.COM

Mark Gimigliano
MARK GIMIGLIANO, P.E.
PROFESSIONAL ENGINEER, N.J. LIC. NO. 24GE04767100

SOIL EROSION & SEDIMENT CONTROL PLAN

VENEZIA PROPERTY
BLOCK 1306, LOT 14.01
48 DURRELL STREET
TOWNSHIP OF VERONA
ESSEX COUNTY NEW JERSEY

SCALE: 1" = 20'
JOB NO.: 23070
DRAWN BY: KLA
CHECKED BY: MG
DATE: 10/6/23
SHEET NO. 2 of 3

J:\Vadha\PROJ\23\23070\dwg\grading\plan_23070.dwg 02/23/24 12:54:17PM mark Layout:SESSC